

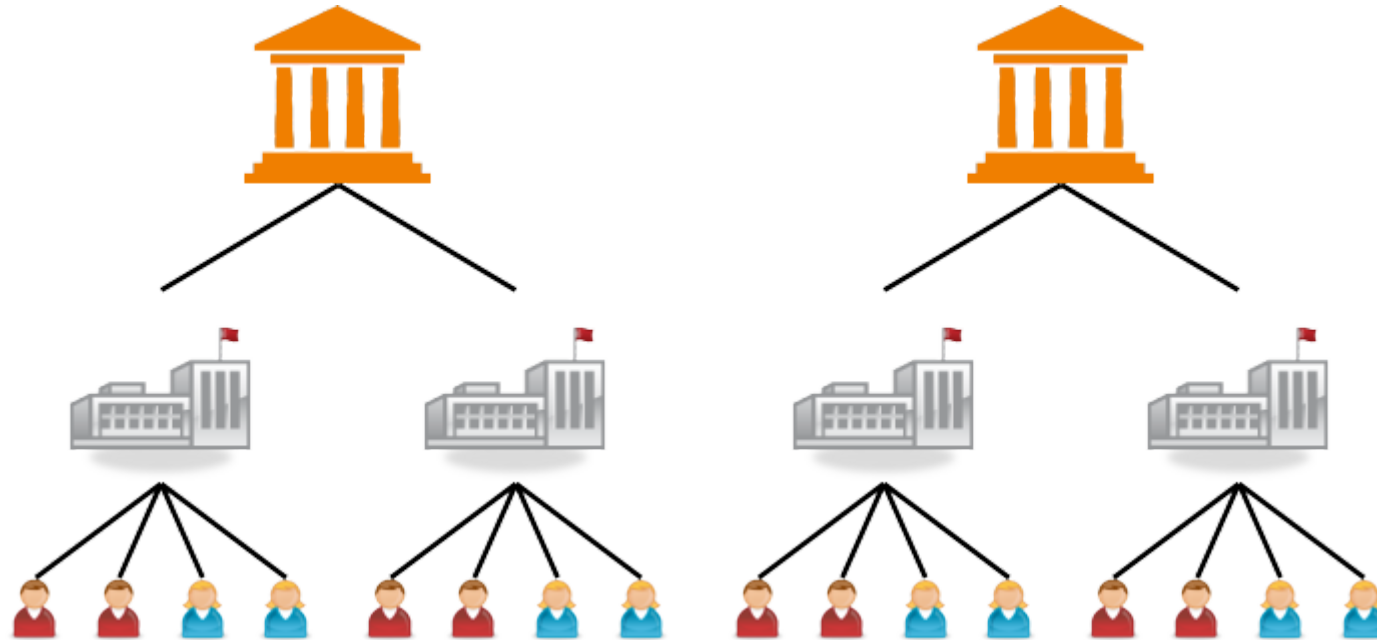
# Introduction to Multilevel Analysis

PSYC 575

Hok Chio (Mark) Lai

University of Southern California

2020/07/30 (updated: 2021-08-29)



# Learning Objectives

Other names used for MLM

Types of data structure MLM handles

# Naming and History of MLM

# Alternative names for MLM:

- Hierarchical linear model: Education/Sociology/Psychology <sup>1</sup>
- Variance component model: Statistics <sup>2</sup>
- Mixed model/mixed-effect model: Statistics, biomedical
- Random coefficient model: Econometrics

[1]: [Raudenbush & Bryk, 1986](#)

[2]: [Aitkin et al., 1981](#)

# History of MLM

MLM naturally handles data coming from different "levels"

Robinson (1950)<sup>1</sup>

- State level: Correlation between % illiterate and % foreign born:
  - $r = -.53$
- Individual level: Within-state correlation between illiteracy and foreign born status:
  - $r = .12$

[1]: p. 354, <https://doi.org/10.2307/2087176>

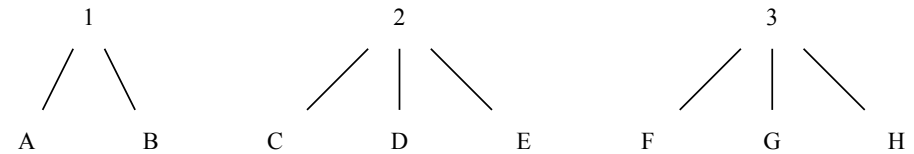
# Usage of MLM

# Hierarchical Data Structure

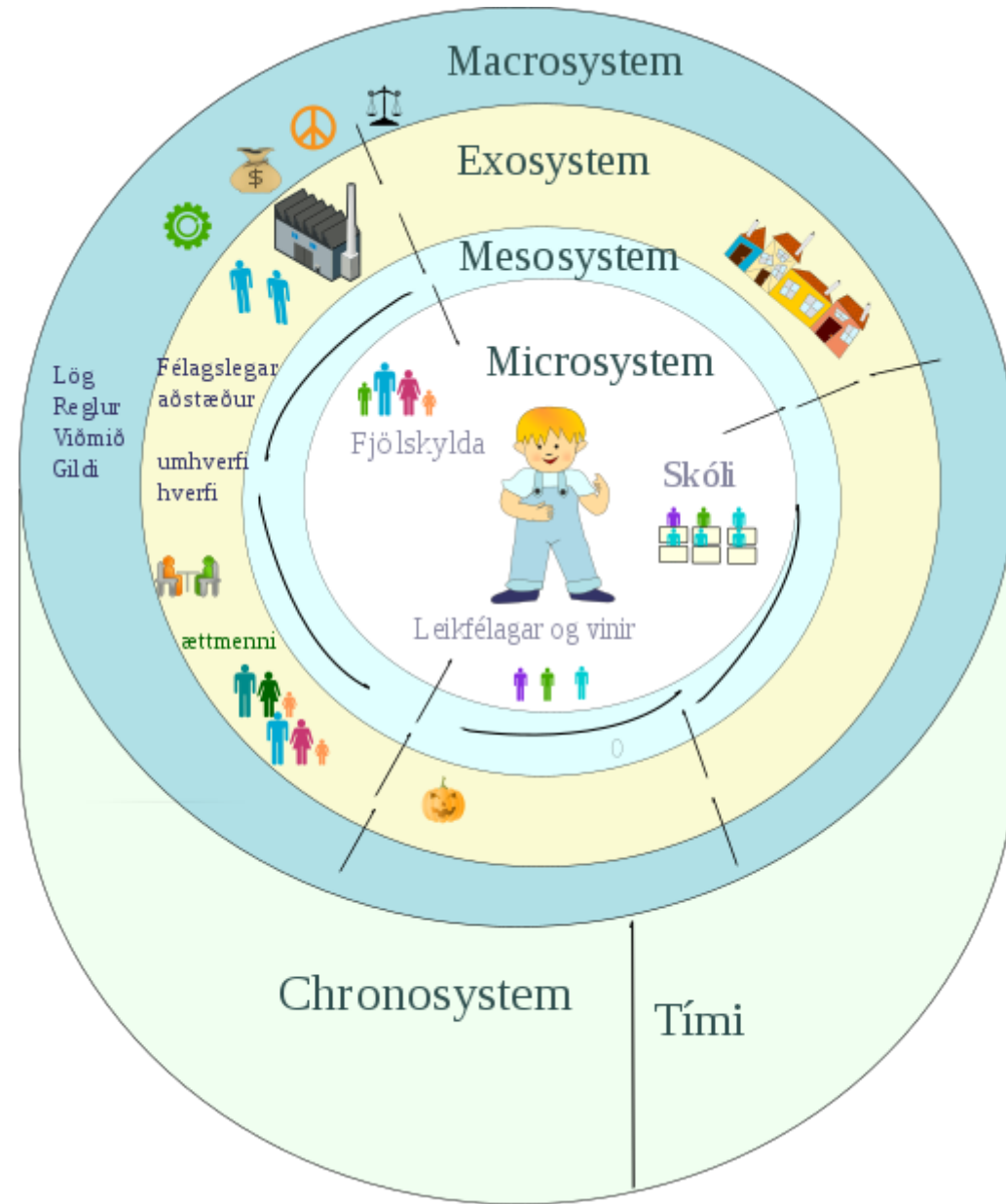
Multiple units at a lower level nested within a unit at a higher level

Level 1	Level 2
Clients	Therapist
Classrooms	School
Employees	Organization
People	Family
Citizens	Country
Measurements	Person

## Network Graph







Once you know that hierarchies exist, you see them everywhere.

Kreft & de Leeuw (1998, p. 1)

Kreft, I. G., & de Leeuw, J. (1998). *Introducing multilevel modeling*. Sage. <https://dx.doi.org/10.4135/9781849209366>

# When it comes to regression, multilevel regression deserves to be the default approach

McElreath (2020, p. 400)

McElreath, R. (2020). *Statistical rethinking: A Bayesian course with examples with R and Stan (2nd ed.)*. Chapman & Hall/CRC.  
<https://doi.org/10.1201/9780429029608>

# Sampling the Literature

PsycINFO, 2020 May-Aug, with keywords

"multilevel model\*" OR "mixed model\*" OR "mixed-effect model\*" OR "hierarchical linear model\*"

---

## Classification

Health & Mental Health Treatment & Prevention (48)

Psychological & Physical Disorders (27)

Neurological Disorders & Brain Damage (15)

Educational Psychology (12)

Developmental Psychology (11)

More >

## Recent literature in 2021

class: middle

- Threshold dose for intravenous nicotine self-administration in young adult non-dependent smokers
- A cross-level analysis of organizational knowledge creation: How do transformational leaders interact with their subordinates' expertise and interpersonal relationships?
- Benefits of movement-integrated learning activities in statistics and research methods courses
- Levels and instability of daily self-esteem in adolescents: Relations to depressive and anxious symptoms
- Internet-delivered cognitive processing therapy for individuals with a history of bullying victimization: A randomized controlled trial
- Problems of cross-cultural criminology no more! Testing two central tenets of self-control theory across 28 nations
- Emotional well-being in covid-19 mass quarantine: The role of personal response and life activity: A 14-day diary study in china

# Software

## General stat software

- R (**lme4**, brms, nlme)
- SAS
- SPSS
- Stata

## Specialized software

- HLM
- MLwiN
- Mplus

# Resources

- Centre for Multilevel Modeling, University of Bristol  
<http://www.bristol.ac.uk/cmm/learning/multilevel-models/>
- Textbook examples (with syntax for different software), Institute for Digital Research and Education, UCLA  
<https://stats.idre.ucla.edu/other/examples/>
- GLMM FAQ by Ben Bolker  
<https://bbolker.github.io/mixedmodels-misc/glmmFAQ.html>
- Curran-Bauer Analytics, Multilevel Modeling Archives <https://curranbauer.org/category/news-and-updates/multilevel-modeling/>
- Multilevel Modeling Discussion List (Listserv) <https://www.jiscmail.ac.uk/cgi-bin/webadmin?A0=multilevel>